



## 29 Banchory Road , Wishaw, ML2 7YX Offers over £105,000

### NEW TO THE MARKET!

A spacious, individual upper apartment, situated in substantial landscaped gardens and a stunning courtyard, within the converted Coach House on Banchory Road

Freshly decorated and newly carpeted, this property must be internally viewed to be fully appreciated.

Comprising entrance hallway and landing, large lounge with a wealth of natural light flooring in, fitted modern kitchen with white goods included, double bedroom with fitted mirrored wardrobe and bathroom.

A separate Office/Study is also contained within the building

Further benefits include a new recently installed boiler, Gas Central Heating and Double Glazing.

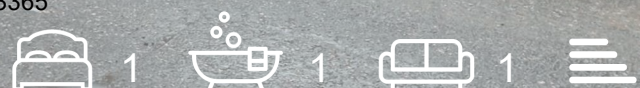
Banchory Road is minutes from Wishaw Town Centre with its many amenities and where all day-to-day requirements can be catered for including various public transport links, sports facilities and schooling. For the commuter, the M3 and M74 motorway networks allow for fast and easy access to Glasgow, Edinburgh and all points beyond.

EPC D

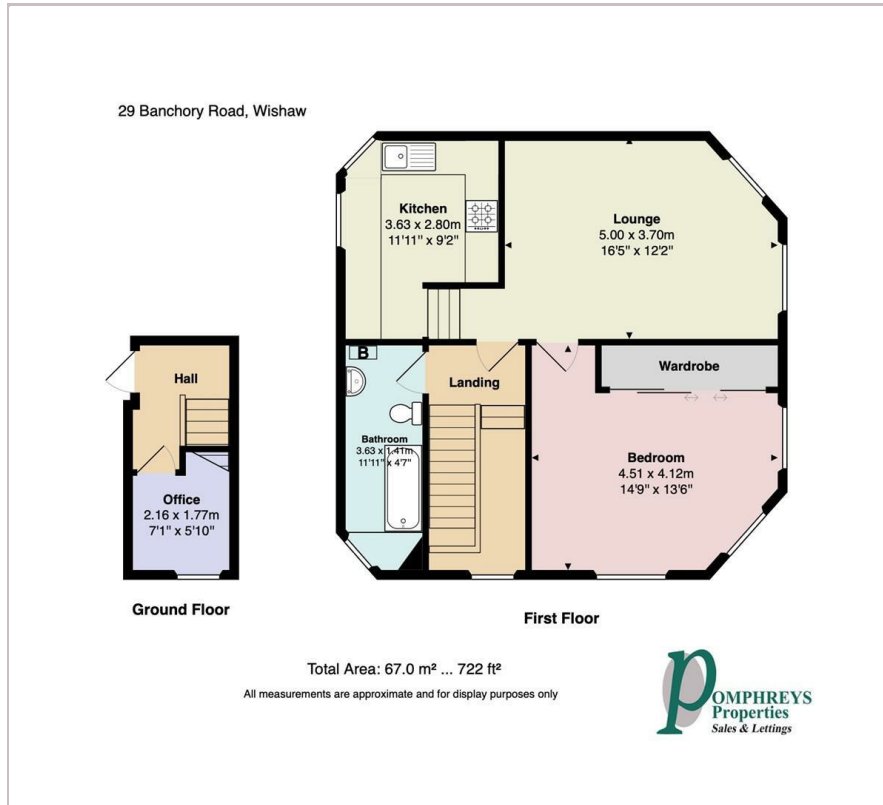
- Stunning Upper Conversion within Coach House
- Substantial Communal Garden Grounds and Stunning Courtyard
- Lounge with a wealth of natural light
- Large Double Bedroom with mirrored wardrobe
- Freshly Painted and Carpeted
- Separate Study/Office
- Double Glazing & Gas Central Heating
- Newly Installed Boiler

### Viewing

Please contact our Pomphreys Properties Ltd Office on 01698373365 if you wish to arrange a viewing appointment for this property or require further information.



## Floor Plan



## Area Map



## Energy Efficiency Graph



These particulars, whilst believed to be accurate are set out as a general outline only for guidance and do not constitute any part of an offer or contract. Intending purchasers should not rely on them as statements of representation of fact, but must satisfy themselves by inspection or otherwise as to their accuracy. No person in this firm's employment has the authority to make or give any representation or warranty in respect of the property.